

CERTIFIED LAND CORNER RECORDATION

DESCRIPTION OF CORNER EVIDENCE FOUND, AND ORIGINAL RECORD (if known)

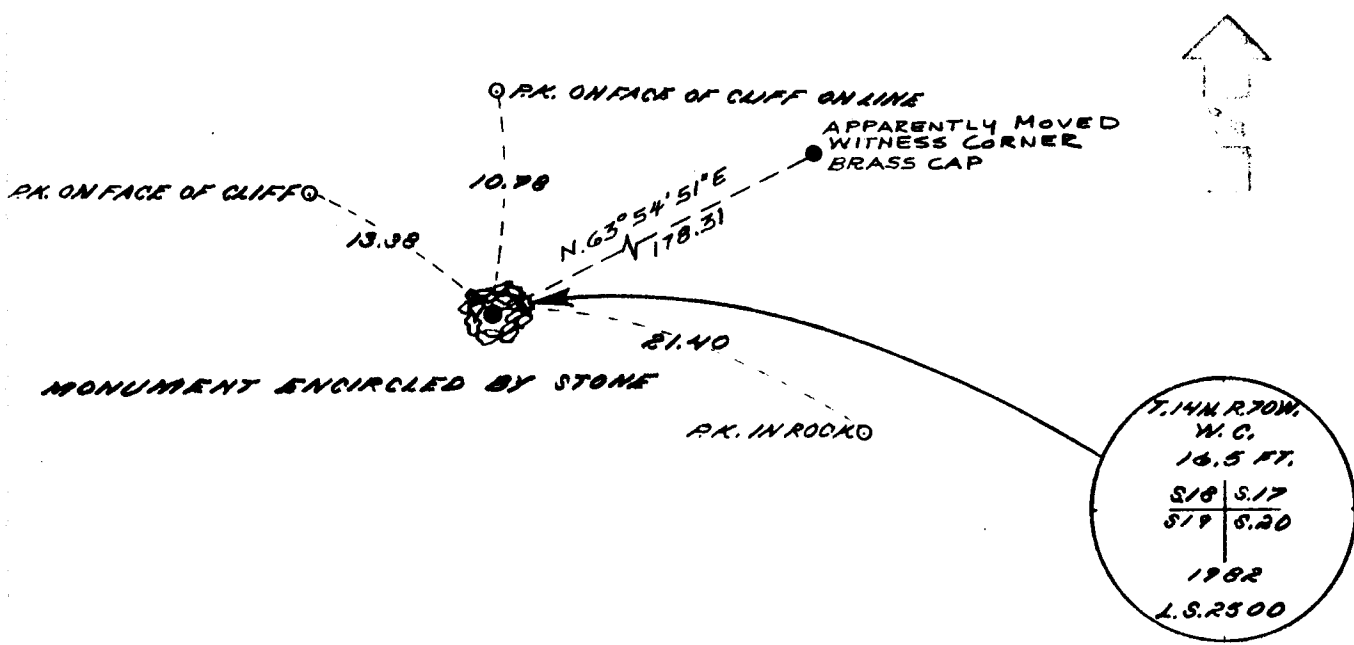
T. 14 N.
 S. 18 | S. 17
 S. 19 | S. 20
 R. 70 W.

SET 1 2" IRON PIPE W/ BRASS CAP FIRMLY SET PROJ. 30" ABOVE GROUND ENCIRCLED BY A MOUND OF STONE 4' BASE TO TOP. MOUND OF STONE RECONSTRUCTED FROM REMNANTS OF ORIGINAL MOUND. TRUE POSITION FALLS ON VERTICAL ROCK WALL.

DESCRIPTION OF MONUMENT AND ACCESSORIES ESTABLISHED TO PERPETUATE THE ORIGINAL LOCATION OF THIS CORNER:

SEE TIES BELOW
 SEE REVERSE SIDE

**SKETCH, WITH COURSE AND DISTANCE TO ADJACENT CORNER IF DETERMINED IN THIS SURVEY.
 (May Sketch or Paste Reproduction on Reverse Side.)**



I, JERRY A. STEIL certify that I have carefully performed or reviewed the work done on the diagrammed corner as reported on this recordation form and approve the same.

Jerry A. Steil
 Signature of Surveyor

L.S. 2500
 Registration No.

STATE OF WYOMING,
 Office of Clerk and Recorder,
 County of Taramie

692570

This "corner record" was filed for record on the _____ day of APR 6 1983, 19____, was noted on the cross-index plat and is assigned page No. _____, in book No. _____

James C. Whitehead
 County Official

Cross Index No. _____	T. _____	R. _____	Mer. _____
_____	T. _____	R. _____	Mer. _____
_____	T. _____	R. _____	Mer. _____
_____	T. _____	R. _____	Mer. _____
_____	T. _____	R. _____	Mer. _____
_____	T. _____	R. _____	Mer. _____
_____	T. _____	R. _____	Mer. _____

N-5⁽²⁾ 14-00

